

*Est 1929*

**JONAH'S**

C O R P O R A T E  
E V E N T S

INFORMATION KIT

*2020*





*Jonah's is conveniently located just 50 minutes north of the Sydney city CBD and is the ideal business retreat. Offering warm hospitality and professional efficiency in a spectacular cliff-top setting.*

Jonah's has eleven stylishly appointed accommodation rooms each with its own private balcony and spectacular views over Whale Beach.

Jonah's can accommodate conferences of up to 30 people in the private Inner Terrace space and for smaller more intimate conferences up to 12 people in Jonah's Private Meeting Room.

## CONFERENCE FACILITIES

### ***The Terrace***

Jonah's largest meeting space next to the main restaurant is full of natural light, with sweeping ocean views and can be made completely private with direct access to the shared terrace balcony.

*Seats a maximum of 20 guests boardroom style or U shape and up to 30 theatre style.*



### ***Jonah's Private***

Is located in an adjacent building and offers an oversized lounge with private balcony. In order to book Jonah's Private at least 3 accommodation rooms must be booked.

*This space is suitable for small boardroom meetings of up to 12 guests and is perfect as a breakout space.*



## CONFERENCE PRICING

### ***Room hire***

THE TERRACE ***\$800 per day***

JONAH'S PRIVATE ***\$800 per day***

### INCLUSIONS & AUDIO VISUAL EQUIPMENT

Included in all conference packages:

- Flipcharts
- Whiteboards & markers
- Mints
- Soft drinks
- Still & sparkling Santa Vittoria water
- Jonah's pens
- Jonah's note pads

### AVAILABLE TO HIRE

Bose Speaker with phone connectivity  
***\$50 per day***

50 inch plasma television screen  
***\$125 per day***

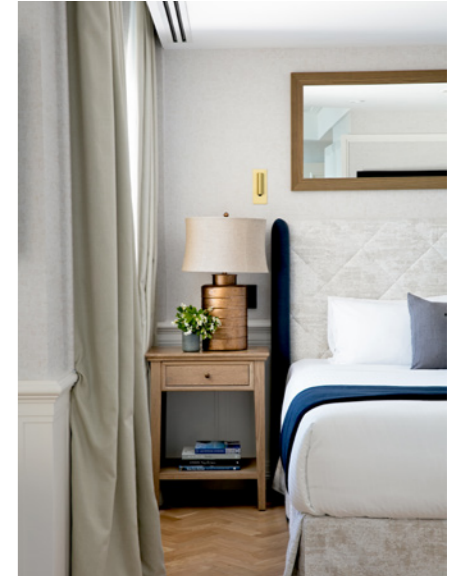
## ACCOMMODATION FACILITIES

### ***11 Luxurious Ocean Retreat Rooms***

8 rooms are located in the main building and 3 in Jonah's Private, all rooms have:

- Stunning ocean views
- Private Balconies
- Marble bathroom and spa bath
- Video on demand (350 + complimentary movies)
- Complimentary on-site parking
- Complimentary WIFI
- USB charger outlets
- In room safe
- Indulgent mini bar with Vittoria Coffee machine
- AH Beard World Luxury Series King Bed
- Bathrobe, slippers
- Iron & ironing board
- Molton Brown Amenities

***Ocean Retreat Rooms including breakfast start from \$600 per room for single occupancy.***



## MENU PRICING

### ARRIVAL TEA & COFFEE *\$10 per person*

Tea and coffee made to order served with a gourmet fruit bowl. Please note: if you don't select this option, your first coffee order will be taken at your nominated meal time e.g. morning tea.

### *Working Style Breakfast, Morning & Afternoon Tea Options*

- *\$14 per person (1 option)*
- *\$20 per person (2 options)*
- *\$28 per person (3 options)*



Breakfast, morning and afternoon tea includes items of your choice from the below menu, as well as a seasonal fruit bowl and a tea and coffee order.

### WORKING STYLE BREAKFAST / MORNING TEA OPTIONS

- Mixed pastries
- Banana chocolate bread (GF)
- Lemon and poppyseed shortbread
- Yoghurt, granola pots and berries
- Savoury quinoa muffins

### MORNING & AFTERNOON TEA OPTIONS

- Cheese selection, condiments, crackers
- Pastiera - Italian ricotta tart
- Biscuits of your choice:  
Macadamia/Hazelnut/Almond
- Bomboloni - Donuts with raspberry
- Gazpacho, toast
- Vegetable crudités, hummus, yoghurt served with Sardinian crisp bread
- Organic almonds, roasted and spiced
- Protein balls: apricot, coconut, chia
- Sweet potato hash, guacamole
- Vegetarian rice paper rolls

We Proudly serve  
Vittoria Coffee &  
La Maison Du  
The Tea

## ***Lunch***

### **WORKING STYLE LUNCH *\$45 per person***

- Selection of gourmet sandwiches on breads or wraps
- 2 gourmet salads
- Cheese platter and
- Fruit platter

*Served with a selection of juices and soft drinks.*

### **JONAH'S INDIVIDUAL GOURMET SALAD *\$50 per person***

- Choice of chicken or vegetarian salad
- Cheese platter
- Flatbreads and dips
- Fruit platter

*Served with a selection of juices and soft drinks.*



### **DELEGATES CHOICE LUNCH *\$60 per person***

- Grilled chicken breast
- Grilled fish of the day
- Grilled beef fillet

*Served with salad and shoestring fries or vegetables.*

- Cheese and fruit platter

*Served with a selection of juices and soft drinks.*



### **DELEGATES SHARED LUNCH *\$70 per person* *(Buffet Style Platters)***

- Grilled chicken breast
- Grilled fish of the day
- Grilled beef fillet

*Served with a selection of salads, roast vegetables and shoestring fries.*

- Cheese and fruit platter

*Served with a selection of juices and soft drinks.*

Please note: lunch order will be taken at morning tea.

### ***Dinner***

***From \$89 per person  
(Excludes beverages)***

Start your evening with cocktails on the Terrace Balcony overlooking beautiful Whale Beach. Move into the restaurant to enjoy our A La Carte or Degustation Menu. Our Sommelier is available to perfectly match wines with your dinner.

***Please discuss your options with our  
Sales & Events Manager.***



## TEAM BUILDING & RELAXATION

### ***Group Activities***

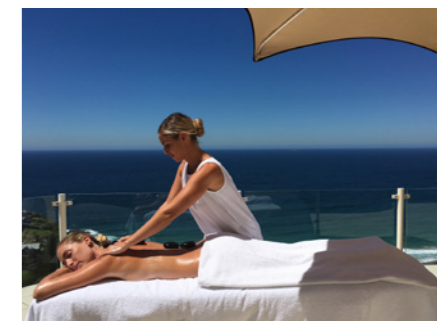
Our idyllic location offers a plethora of activities both on and off-site including meditation, yoga, group fitness training, nature walks, water sports such as surfing, swimming, wind surfing, sailing regattas, cruising on beautiful Pittwater on a Beneteau yacht or a luxurious 64FT Sunseeker Predator.

***Contact the Sales & Events Manager  
for information on any of the above.***

### ***Relaxation***

Ensure your delegates feel nurtured, rejuvenated and restored, ready to get the most out of your conference by treating them to a relaxing massage or beauty treatment.

***Available for in room guests only.***



## TRANSFERS

### *Transportation*

Why not fly to Jonah's by seaplane? Sydney Seaplanes are the fastest and most luxurious way to travel. The 20 minute flight from Rose Bay showcases breathtaking views of Sydney Harbour and the Northern Beaches, before touching down in picturesque Pittwater. All transfers to Jonah's are included in the flight cost.

If flying is not for you, we work exclusively with OnQ Limousines, Royale Limousines and Revel Drive whose chauffeured fleet of cars are available to take you to and from Jonah's in comfort and style.

### *Sydney Seaplanes*

P: 1300 780 284

### *OnQ Limousines*

P: 0407 027 119

### *Royale Limousines*

P: 9660 3666

### *Revel Drive*

P: 0404 33 77 99







+61 (2) 9974 5599 | [sales@jonahs.com.au](mailto:sales@jonahs.com.au)

*69 Bynya Road*

*Whale Beach, Sydney, Australia*

 [jonahswhalebeach](#)  [jonahsrestaurantandhotel](#)

[jonahs.com.au](http://jonahs.com.au)